

HPHT Single Pin FeedThru Connectors

Manufactured with the highest reliability & durability for critical environments

Products:

- Single Pin Feedthrough
- Multi-Pin Connectors
- Wellhead Penetrator
- High Voltage Power Feed-Thru
- Electrical Assemblies
- Custom Rubber Molding

Capabilities:

- Elastomeric
- Engineering Thermoplastics
- Design / Engineering
- Injection / Compression Molding
- Precision Machining
- Assembly
- Pressure Testing

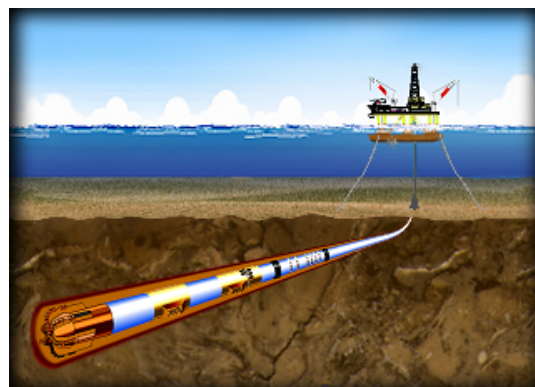


LUC Technologies manufactures custom and standard HP/HT Single Pin Feedthru and Co-axial connectors for use in MWD/LWD, open hole and cased hole logging, and a variety of other downhole instruments and applications. As the industry explores and develops reserves in more aggressive environmental conditions, interconnect systems are required to provide accurate and reliable data at increasing temperatures and pressures which are encountered at greater wellbore depths. Our connectors are engineered to be robust and to meet these challenging conditions.

LUC Technologies Connectors are injection molded and machined to achieve maximum quality. Our connectors minimize deformation and creep, withstanding continuous extreme conditions up to 30,000 psi and 400°F (200°C). The advantage of engineered thermoplastic molding and years of experience enables us to freely customize your connectors over traditional glass to metal technology. Contact us for more information.

Features:

- Injection Molded PEEK HT Body
- Up to 30 KSI @ 200°C Service
- Standard Designs, No New Tooling
- BeCu Machined Sockets Tempered to TH04 for Max Performance
- Universally Interchangeable with other Single Pin Feedthru & K20



LUC Technologies
8825 Solon Rd., Suite E1
Houston, TX 77064

Engineering:
Alex Martinez
alex@luc-tech.com
832-341-4411

Sales:
William "Bill" Scott
bill@luc-tech.com
281-570-9595

Standard Single Pin Feedthru Details

Products:

- Single Pin Feedthrough
- Multi-Pin Connectors
- Wellhead Penetrator
- High Voltage Power Feed-Thru
- Electrical Assemblies
- Custom Rubber Molding

Capabilities:

- Elastomeric
- Engineering Thermoplastics
- Design / Engineering
- Injection / Compression Molding
- Precision Machining
- Assembly
- Pressure Testing

LUC Technologies

8825 Solon Rd., Suite E1
Houston, TX 77064

Engineering:

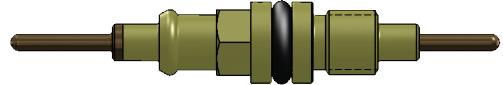
Alex Martinez
alex@luc-tech.com
832-341-4411

Sales:

William "Bill" Scott
bill@luc-tech.com
281-570-9595

S10061-00 K20 FeedThru / S10063-00 Boot Kit

Style: #16 PIN X #16 PIN
Mounting: Ø.312/.314 X 1/4-28 THD
Rated: 175°C @ 20KSI
Materials: PEEK HT/17-4 S.S/FKM



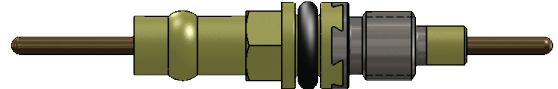
S10207-00 FeedThru / S10208-00 Boot Kit

Style: #16 PIN X #16 PIN
Mounting: Ø.312/.314 X 1/4-28 THD
Rated: 175°C @ 20KSI
Materials: PEEK HT/BeCu/FKM



S10209-00 HPHT FeedThru / S10208-00 Boot Kit

Style: #16 PIN X #16 PIN
Mounting: Ø.312/.314 X 1/4-28 THD
Rated: 200°C @ 30KSI
Materials: PEEK HT/BeCu/FKM



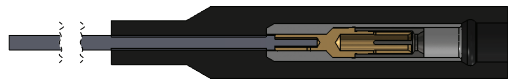
S10210-00 FeedThru / S10211-00 Boot Kit

Style: #16 PIN X 6-32 UNCTHD
Mounting: Ø.438/.440
Rated: 175°C @ 20KSI
Materials: PEEK HT/BeCu/FKM



Boot Kit Details

Style: #16 SKT X #16-#20 CMP
Rated: 200°C @ 30KSI
Materials: BeCu/TEFLON/FKM



Applications:

- Downhole Sensors
- Perforation/Detonation
- Completion/Fracking
- Directional Drilling
- MWD/LWD
- Wireline

Key Ratings:

- 5K to 30KSI Pressure rating
- Up to 400° F (200°C) Temperature
- 1 – 14 Amps
- 200 – 2500 Volts

**Contact us for different termination style or to customize your Single Pin FeedThru Connectors.

Why buy LUC-Tech Single Pin FeedThru?

- We manufacture with the highest reliability & durability for critical environments
- High success rate with all electrical components manufactured at LUC Technologies
- Qualified staff with 15+ yrs experience in connector designs, mold designs, specialized in PEEK/PEK injection molding